

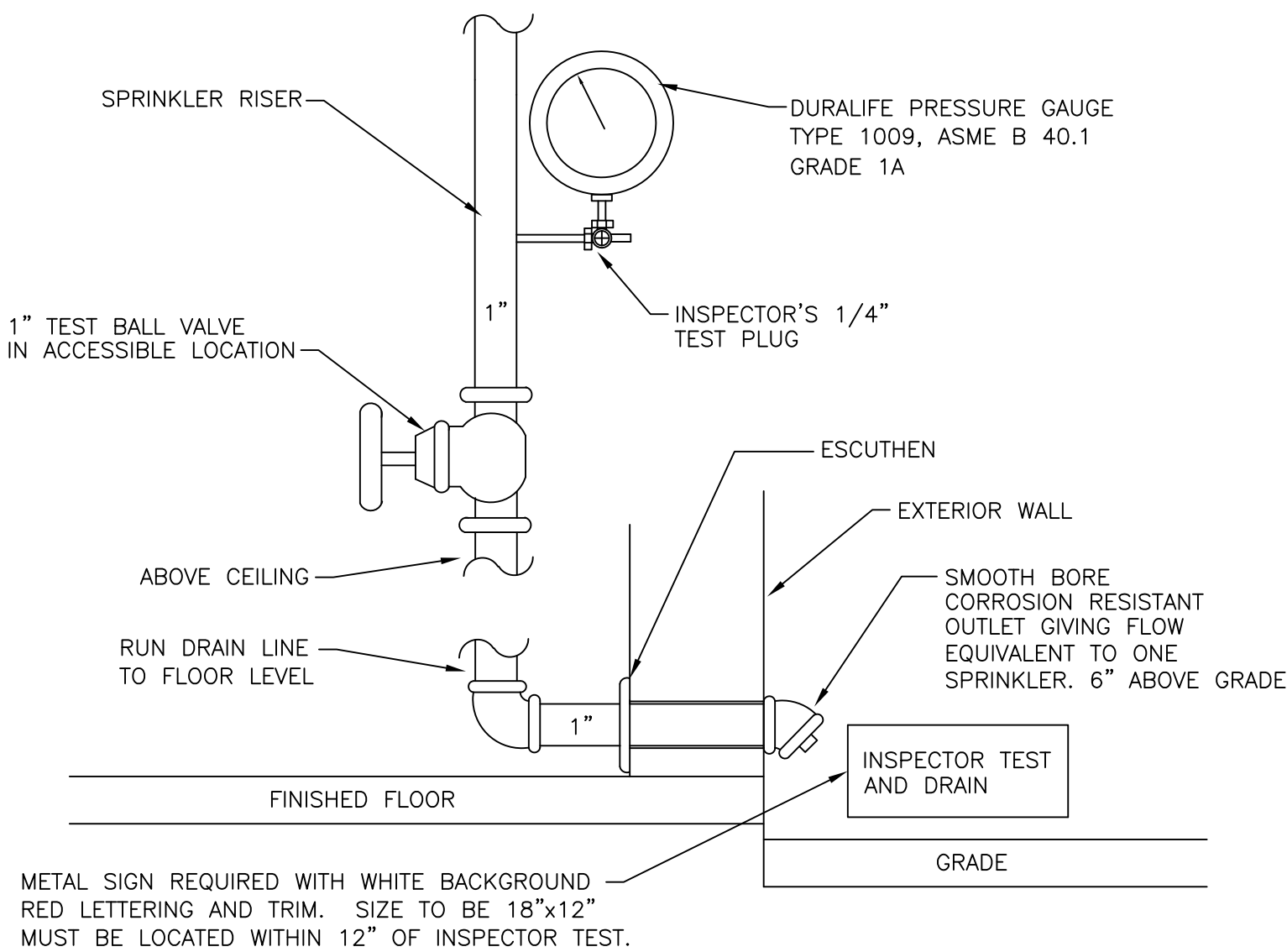
12/23/2025 11:10:12 AM

L:\228A\FP

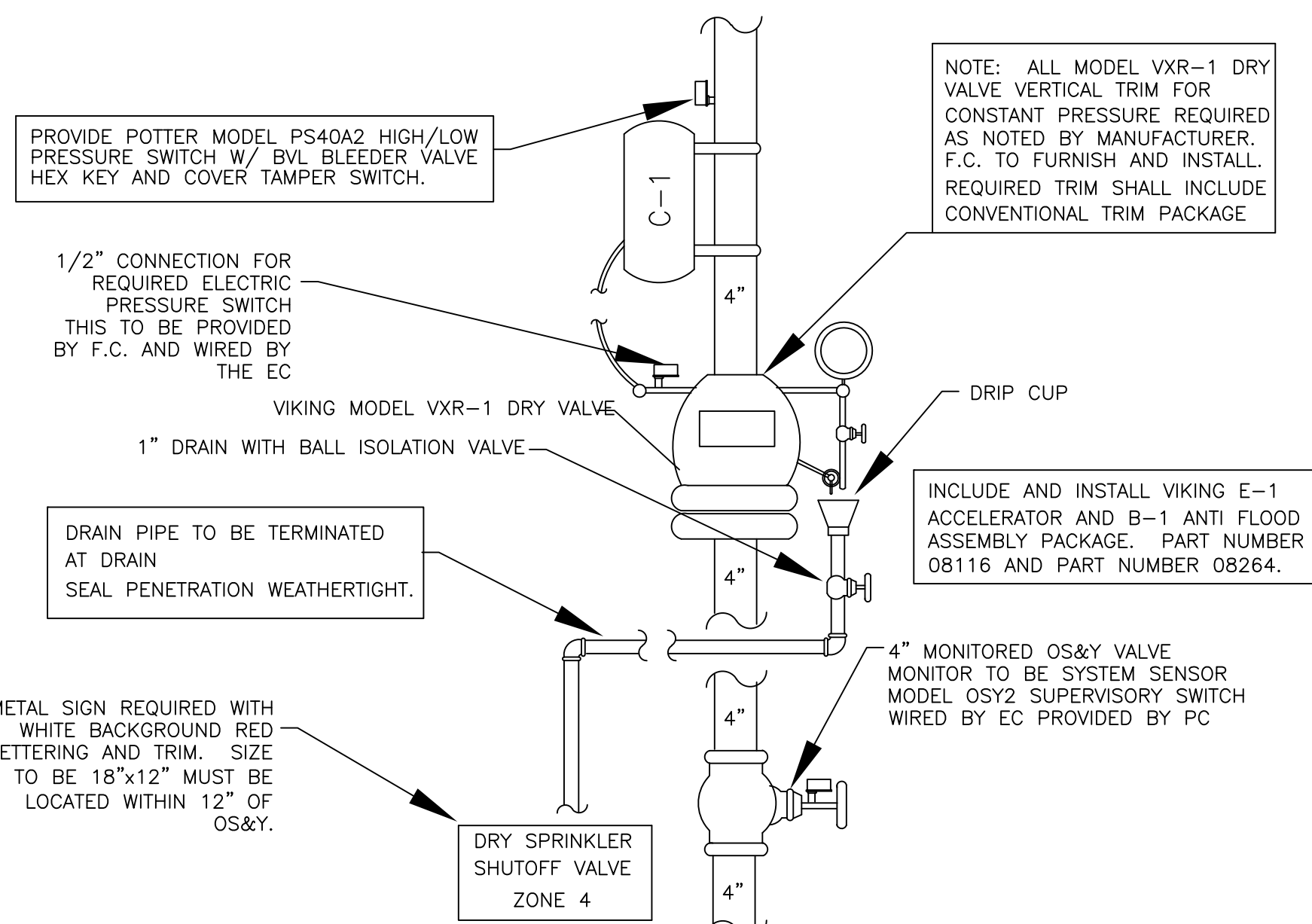
FIRE PUMP SCHEDULE									
UNIT TAG	SERVICE	GPM	TDH (PSI)	RPM	MOTOR HP	ELECTRICAL CHARACTERISTICS			BASIS OF DESIGN MANUFACTURER AND MODEL NO.
						VOLTS	PHASE	HZ	
FP-1	CAMPUS FIRE PUMP	750	50	1780	42.3	208	3	60	VERTICAL INLINE PEERLESS - 6PVF12
FP-2	JOCKEY PUMP	8	60	1750	0.75	208	3	60	CLOSE COUPLED GRUNDFOS-CR-1-6

*PUMP TO BE PROVIDED WITH CONTROLLER

1 FIRE PUMP SCHEDULE



2 SPRINKLER PIPING INSPECTORS CHECK DETAIL

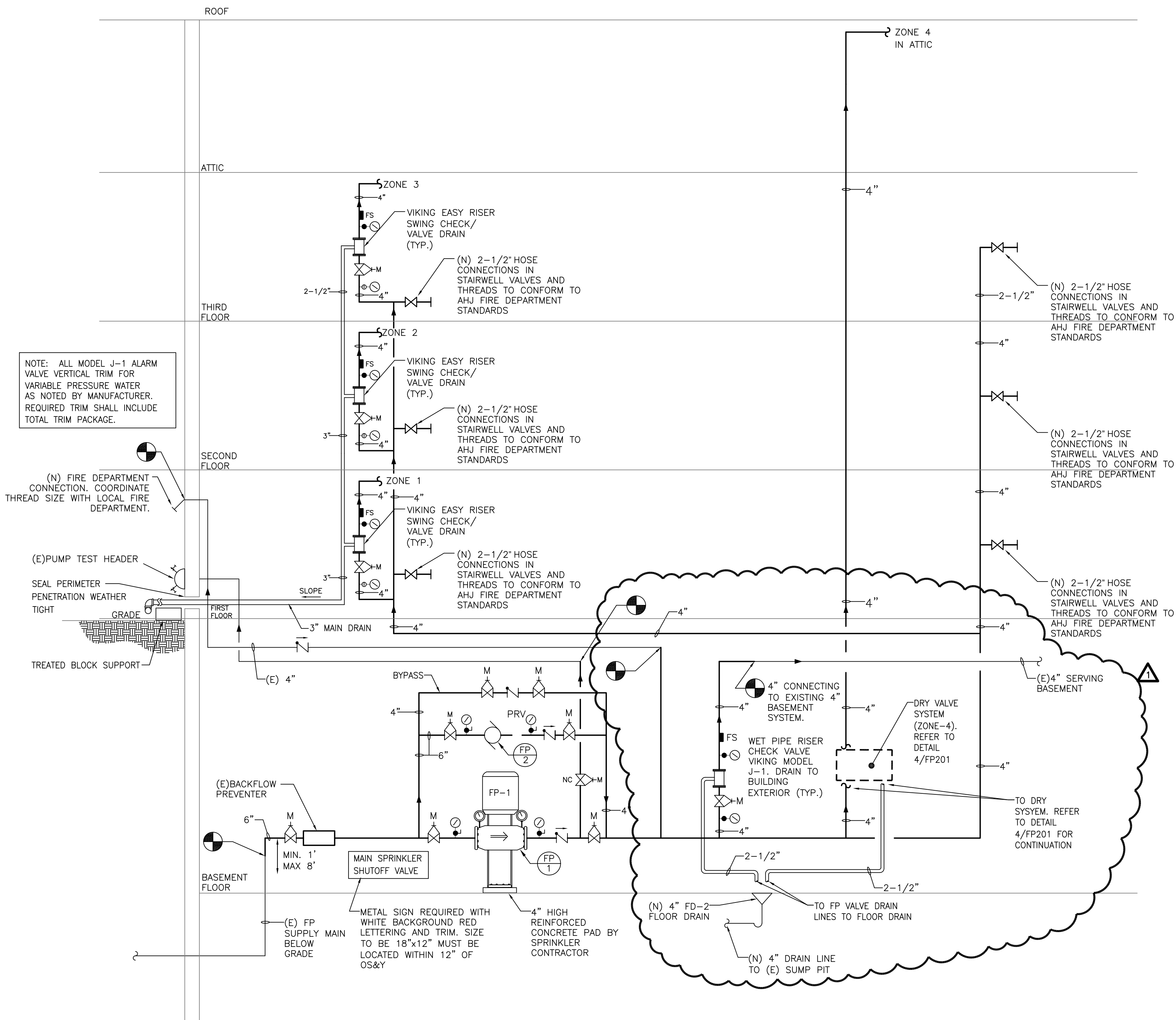


AIR COMPRESSOR SCHEDULE									
UNIT NO.	AREA SERVED	CUT IN PRESSURE PSI	CUT OUT PRESSURE PSI	HP	ELECTRICAL CHARACTERISTICS			SUPPLIED AIR @ 50 PSI SCFM	VIKING MODEL NO.
					VOLTS	PHASE	CYCLE		
C-1	3RD FLR ATTIC	15	65	1	208	1	60	11.4	VXR-1

IMPORTANT NOTE: COMPRESSOR MUST BE ABLE TO COMPLETELY CHARGE THE SYSTEM WITH-IN 30 MINUTES IF COMPRESSOR IS NOT ABLE TO PRESSURIZE THE SYSTEM IN THIS TIME UNIT CONTRACTOR IS REQUIRED TO PROVIDE A COMPRESSOR THAT IS ABLE TO MEET THIS REQUIREMENT WITH LIKE ACCESSORIES THAT IS SIZED PER MANUFACTURES RECOMMENDATIONS.

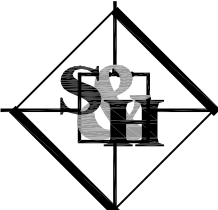
NOTES: PROVIDE UNIT COMPLETE WITH INTEGRAL CHECK VALVE TO PROVIDE A REGULATED AND RESTRICTED AIR SUPPLY UNIT TO BE USED AS THE MAINTENANCE & BASIC AIR SUPPLY FOR THE DRY PIPE FIRE PROTECTION SYSTEMS PROVIDE UNIT COMPLETE WITH INTEGRAL PRESSURE RELIEF VALVE SET TO 65 PSI MAX PROVIDE UNIT COMPLETE WITH INTEGRAL AIR SUPPLY FILTRATION ASSEMBLY *UNIT TO HAVE ADJUSTABLE ON/OFF DIFFERENTIAL PRESSURES AND ADJUSTABLE SUPPLY AIR PRESSURE FROM A MINIMUM OF 1.5 PSI TO A MAXIMUM OF 75 PSI

4 SPRINKLER DRY VALVE DETAIL



3 FIRE SERVICE DETAIL

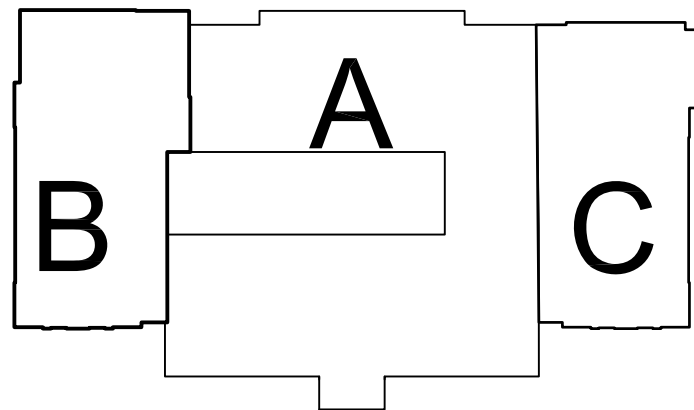
M/E/P Engineer:



SCHILLER AND HERSH ASSOCIATES, INC.
Consulting M/E/P Engineers
636 Skippack Pike, Suite 200
Blue Bell, PA 19422
Certificate of Authorization: 24GA28014000
S&H JOB #2528A

RICHARD L. DELP, PE
NEW JERSEY PROFESSIONAL
ENGINEER
LICENSE NO.: GE45368

KEY PLAN:



No.	Date	Description
1	12/23/25	ADDENDUM 1
	12/08/25	OUT TO BID
	12/03/25	DCA Submission

DiGroupArchitecture
ARCHITECTURE FOR CHANGE
15 Bethany Street • New Brunswick, NJ 08901 • T:732.246.6242
2450 W Hunting Park Ave., Bldg 9 • Philadelphia, PA 19129-1302 • T:215.624.3600

Richard D. Alderico, AIA
NJ RA A1 15023, NY RA 027416, PA RA 405474

DO NOT SCALE. DRAWING MAY BE PRINTED AT REDUCED SCALE. CONSULT WITH ARCHITECT FOR DIMENSIONS.

Client:

Rowan University
201 Mullica Hill Rd.
Glassboro, NJ 08028

Project:

Alterations to Facility Located at 202 Delsea Drive
BLOCK 26 / LOT 412
202 Delsea Dr.
Glassboro, NJ 08028

Drawing Information:

Project No: 25.024
Date:
Drawn By: JBM
Checked By: RLD

Sheet Name:

FP SCHEDULES & DETAILS

Sheet No:

FP-201
Sheet 0 of 000